

5x Tacke/GE1,5 s

FOR SALE

Available Q2 2017!

Contact:

Mr. Ole Becker

Phone +49 421 691 053 02

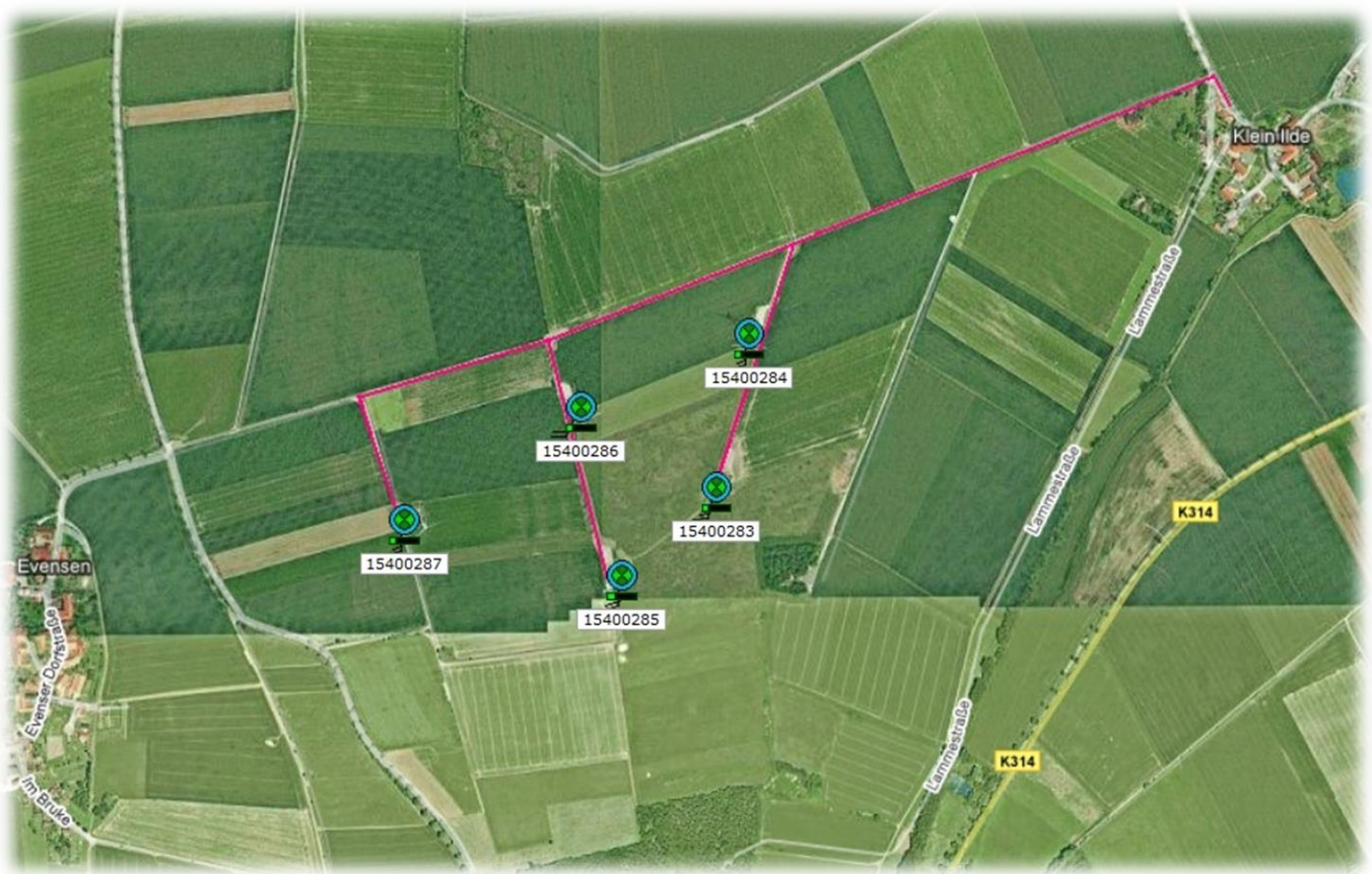
Mobile +49 170 529 042 9

Fax +49 421 691 054 99

email o.becker@deutsche-windtechnik.de

Specific wind farm data

Wind Farm design:	5x Tacke/GE TW 1,5s wind turbines for sale
Location:	Bockenem, Lower saxony, Germany
Hub Height / Rotor Diameter:	65 m / 70 m
Tower:	tubular steel, 3 parts
Power limitation system:	Pitch
Transformer:	included



<i>Turbine wind farm No.</i>	<i>Turbine Serial No.</i>	<i>Date of initial operation</i>
WEA 1	GE 15400287	21.03.2001
WEA 2	GE 15400286	20.03.2001
WEA 3	GE 15400285	20.03.2001
WEA 4	GE 15400284	22.03.2001
WEA 5	GE 15400283	24.03.2001

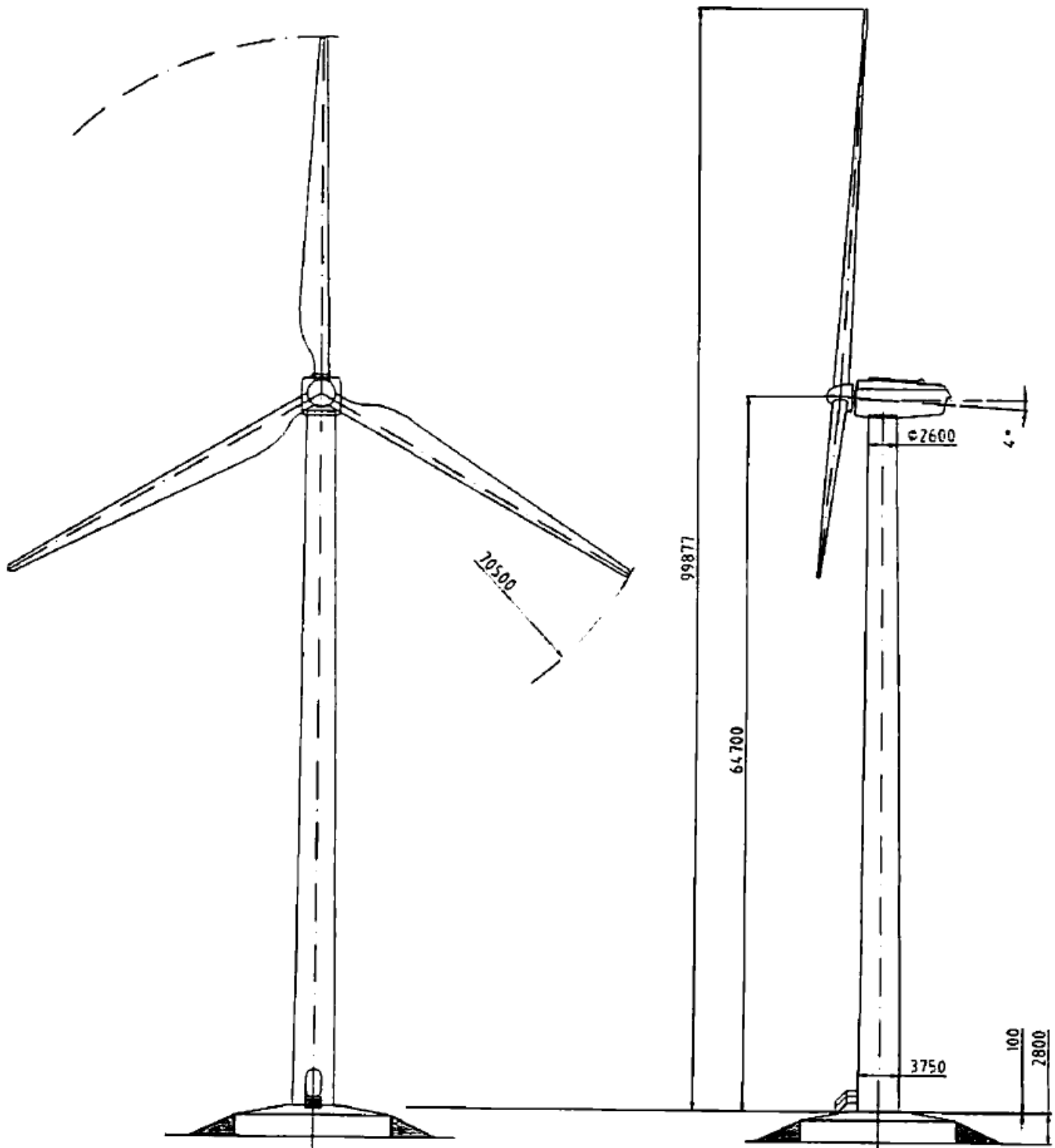
Key facts:

- Installed in 2001
- Operated within the company group
- Exclusively offered for sale by Deutsche Windtechnik Repowering GmbH & Co. KG
- Monitoring and inspection reports available
- Additional technical documentation available
- Services included: Dismantling
- Additional technical and supporting services available upon request

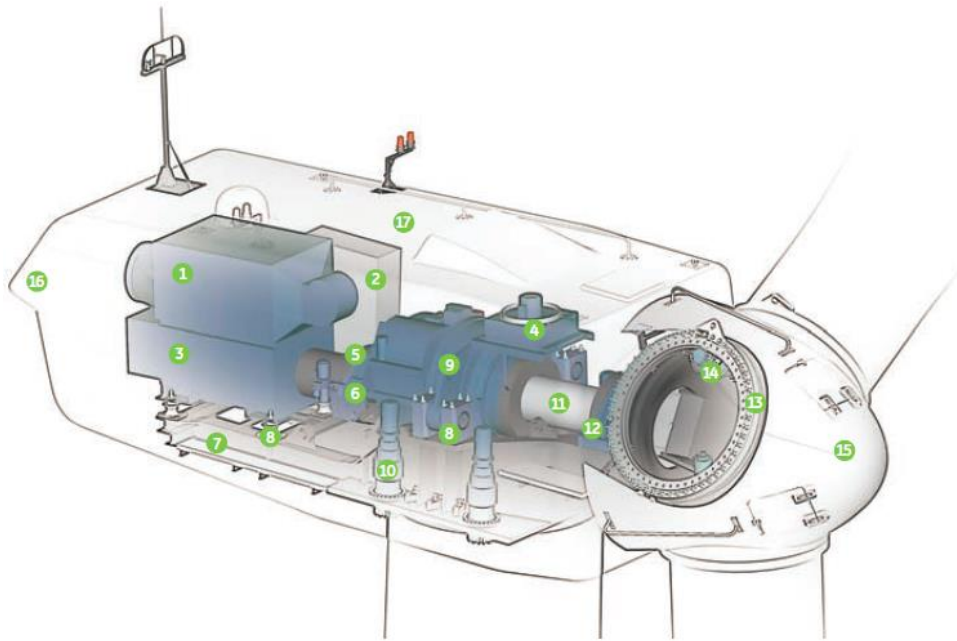


Main components TW 1,5s

Components	Manufacturer	Type
Rotor blades	LM Glasfiber	LM 34.0 P
Gearbox	Winergy	PEAS 4390.5
Generator	VEM	DASAA 5023-4UA
Converter	ALSTOM	ALSPA MD2000
Control software	GE	VISUPROfessional



Bildung 3-1: Gesamtansicht der GE Wind Energy 1.5s mit 64,7 m Nabenhöhe, DIBt WZ II u. DIBt WZ III / IEC TC IIa



- 1 Heat exchanger
- 2 Control panel
- 3 Generator
- 4 Oil cooler
- 5 Coupling
- 6 Hydraulic parking brake
- 7 Main frame
- 8 Impact noise insulation
- 9
- 10 Yaw drive
- 11 Rotor shaft
- 12 Bearing housing
- 13 Rotor hub
- 14 Pitch drive
- 15 Nose cone
- 16 Ventilation
- 17 Nacelle

Technical Data 1.5s

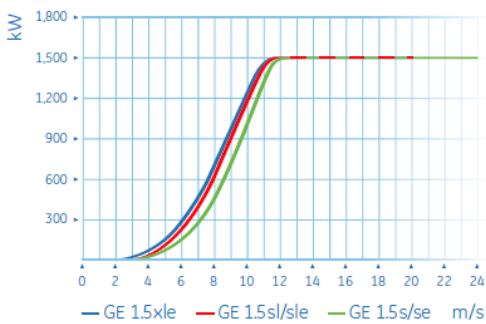
Operating data	
• Rated capacity:	1,500 kW
• Cut-in wind speed:	4 m/s
• Cut-out wind speed (10 min. avg.):	25 m/s
• Rated wind speed:	13 m/s
• Wind Class - IEC:	IIa
• Wind Class - DIBt WZ:	II/III

Rotor	
• Number of rotor blades:	3
• Rotor diameter:	70,5 m
• Swept area:	3904 m ²
• Rotor speed (variable):	12,0 – 22,2 rpm

Tower	
• Hub heights - IEC:	64,7 m
• Hub heights - DIBt:	64,7 m

Power control	Active blade pitch control
----------------------	----------------------------

Power Curve



www.gewindenergy.com



Gearbox

- Three step planetary spur gear system

Generator

- Doubly fed, three-phase induction (asynchronous)

Converter

- Pulse-width modulated IGBT frequency converter

Braking system (fail-safe)

- Electromechanical pitch control for each blade (3 self-contained systems)
- Hydraulic parking brake

Yaw system

- Electromechanical driven with wind direction sensor and automatic cable unwind

Control system

- PLC (Programmable logic controller) with remote control and monitoring system

Noise reduction

- Impact noise insulation of the gearbox and generator
- Sound reduced gearbox
- Noise reduced nacelle
- Rotor blades with minimized noise level

Lightning protection system

- Lightning receptors installed along blades
- Surge protection in electrical components

Tower design

- Multi-coated, conical tubular steel tower with safety ladder to the nacelle
- Load lifting system, load-bearing capacity over 200 kg

Operating limits (outside temperature)

- cold weather extreme: -30° C to +40° C / -40° C to +50° C survival without operation
- standard: -15° C to +40° C / -20° C to +50° C survival



Subject to technical alterations, errors and omissions.

*only for WZII



TACKE
Windenergie GmbH

Holsterfeld 5a
48499 Salzbergen
Postfach 1261
48497 Salzbergen
Telefon: 05971-980-0
Telefax: 05971-980-1090

**Vor Inbetriebnahme die Bedienungsanleitung
und Sicherheitshinweise lesen und beachten !**



TACKE
Windenergie GmbH

Anlagentyp: TW1.5S

Baujahr: 12/00

Kom.-Nr.: 1500287

WKA-Nr.:



Statistikdaten

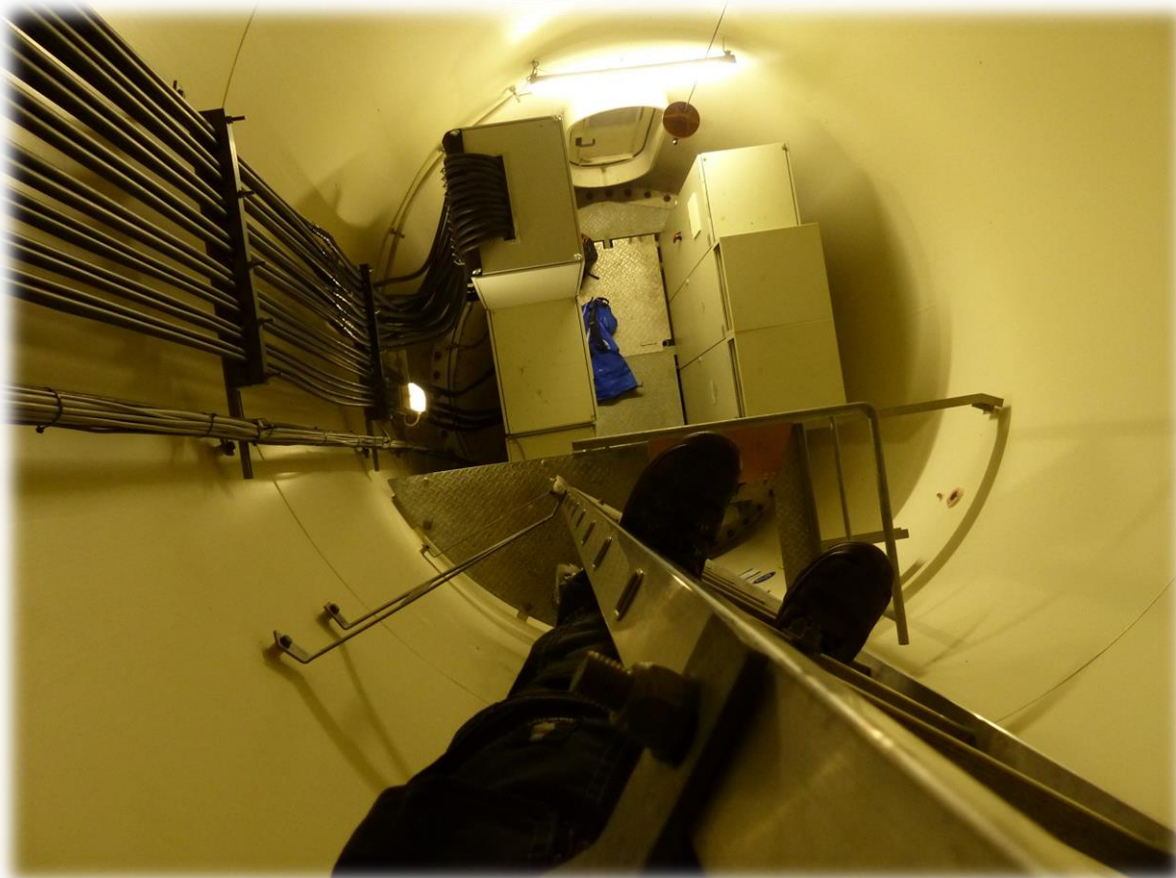
SystemNumber	Datum	Uhrzeit	Uhrzeit Offset	Produktion	Bezug	Betrieb	Anlage Ok	Ausfall	Netzausfall	Wetterausfall	Externer Stop	Ex
15287	02.01.2017	15:00:00		60	39137128	72741	95635:02:21	120328:23:03	4333:25:19	27:59:07	12044:21:40	1:39:17
15287	02.01.2017	16:00:00		60	39137129	72741	95636:02:21	120329:23:03	4333:25:19	27:59:07	12044:21:40	1:39:17
15287	02.01.2017	17:00:00		60	39137512	72741	95637:02:21	120330:23:03	4333:25:19	27:59:07	12044:21:40	1:39:17
15287	02.01.2017	18:00:00		60	39137618	72741	95638:02:21	120331:23:03	4333:25:19	27:59:07	12044:21:40	1:39:17
15287	02.01.2017	19:00:00		60	39137817	72741	95639:02:21	120332:23:03	4333:25:19	27:59:07	12044:21:40	1:39:17
15287	02.01.2017	20:00:00		60	39137975	72741	95640:02:21	120333:23:03	4333:25:19	27:59:07	12044:21:40	1:39:17
15287	02.01.2017	21:00:00		60	39138146	72741	95641:02:21	120334:23:03	4333:25:19	27:59:07	12044:21:40	1:39:17
15287	02.01.2017	22:00:00		60	39138397	72741	95642:02:21	120335:23:03	4333:25:19	27:59:07	12044:21:40	1:39:17
15287	02.01.2017	23:00:00		60	39138605	72741	95643:02:21	120336:23:03	4333:25:19	27:59:07	12044:21:40	1:39:17
15287	03.01.2017	00:00:00		60	39138829	72741	95644:02:21	120337:23:03	4333:25:19	27:59:07	12044:21:40	1:39:17
15287	03.01.2017	01:00:00		60	39139015	72741	95645:02:21	120338:23:03	4333:25:19	27:59:07	12044:21:40	1:39:17
15287	03.01.2017	02:00:00		60	39139411	72741	95646:02:21	120339:23:03	4333:25:19	27:59:07	12044:21:40	1:39:17
15287	03.01.2017	03:00:00		60	39140041	72741	95647:02:20	120340:23:02	4333:25:19	27:59:07	12044:21:40	1:39:17
15287	03.01.2017	04:00:00		60	39140631	72741	95648:02:20	120341:23:02	4333:25:19	27:59:07	12044:21:40	1:39:17
15287	03.01.2017	05:00:00		60	39141602	72741	95649:02:20	120342:23:02	4333:25:19	27:59:07	12044:21:40	1:39:17
15287	03.01.2017	06:00:00		60	39142685	72741	95650:02:20	120343:23:02	4333:25:19	27:59:07	12044:21:40	1:39:17
15287	03.01.2017	07:00:00		60	39143346	72741	95651:02:20	120344:23:02	4333:25:19	27:59:07	12044:21:40	1:39:17
15287	03.01.2017	08:00:00		60	39143808	72741	95652:02:20	120345:23:02	4333:25:19	27:59:07	12044:21:40	1:39:17
15287	03.01.2017	09:00:00		60	39144503	72741	95653:02:20	120346:23:02	4333:25:19	27:59:07	12044:21:40	1:39:17
15287	03.01.2017	10:00:00		60	39144926	72741	95654:02:20	120347:23:02	4333:25:19	27:59:07	12044:21:40	1:39:17
15287	03.01.2017	11:00:00		60	39145412	72741	95655:02:20	120348:23:02	4333:25:19	27:59:07	12044:21:40	1:39:17
15287	03.01.2017	12:00:00		60	39146176	72741	95656:02:20	120349:23:02	4333:25:19	27:59:07	12044:21:40	1:39:17
15287	03.01.2017	13:00:00		60	39147151	72741	95657:02:20	120350:23:02	4333:25:19	27:59:07	12044:21:40	1:39:17
15287	03.01.2017	14:00:00		60	39148242	72741	95658:02:20	120351:23:02	4333:25:19	27:59:07	12044:21:40	1:39:17
15287	03.01.2017	15:00:00		60	39149354	72741	95659:02:20	120352:23:02	4333:25:19	27:59:07	12044:21:40	1:39:17

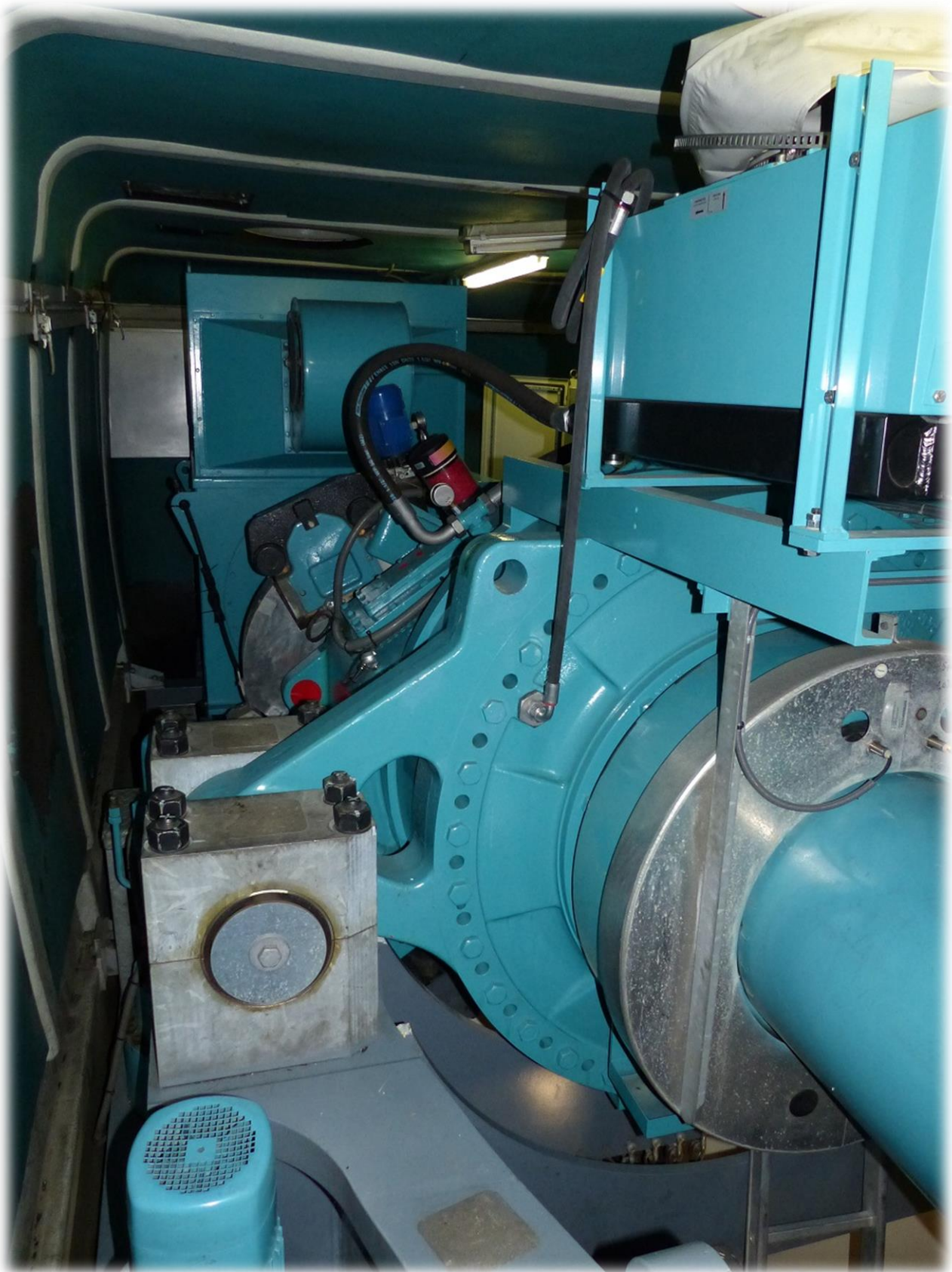
Graphik Drucken Schließen

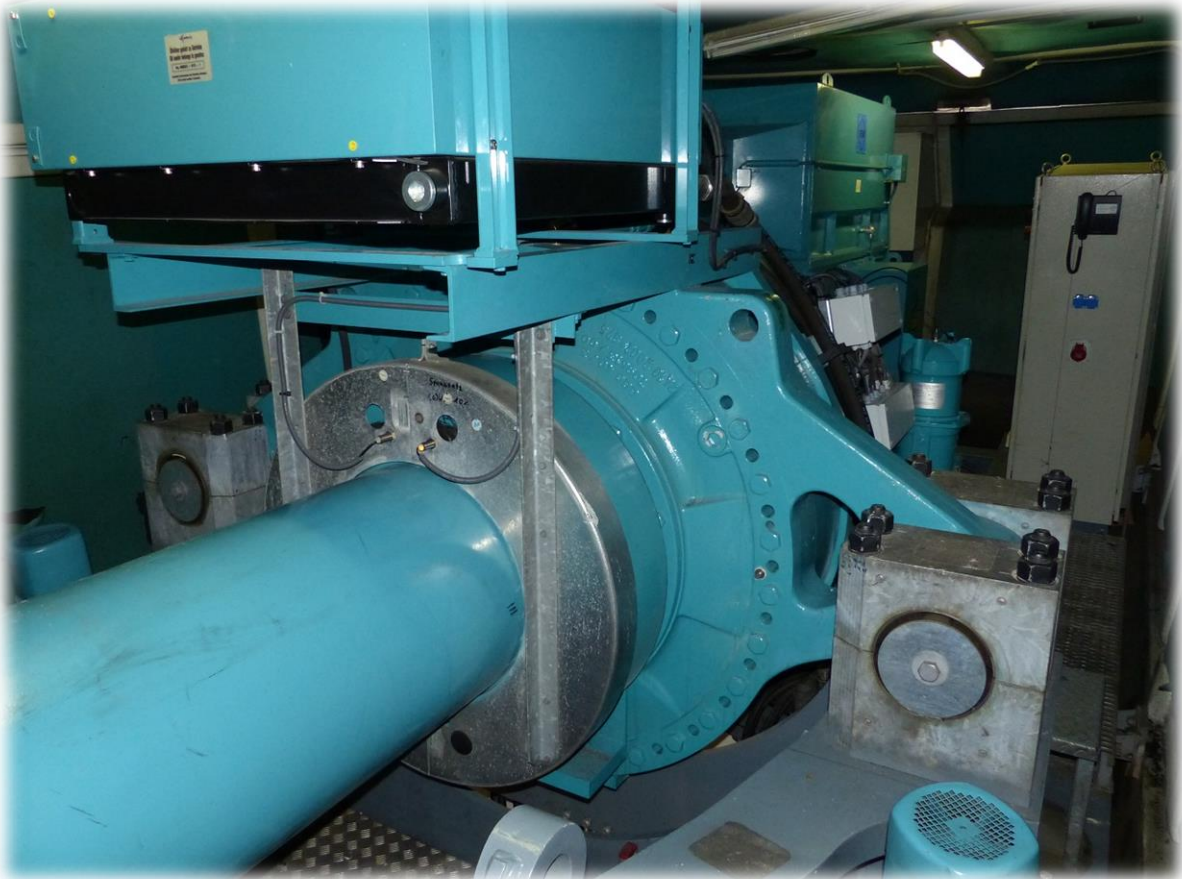
GEWE B1 5s Idle P_ACT: 222 kW N_GEN_CCU: 1074 Upr_V_WIN: 5.3 m/s















PEAS 4390,5




1P NFC- 4860541 - 0115 - 1

i = 90,302	Weight: 13500 kg	
n1 = 20/min	n2 = 1806/min	1660 kW
Optigear Synthetic X VG 320	Oil ~ 220 L	Fauf 6564941
Service No.: 4801071 - 20 - 6		



Siemens AG , Am Industriepark 2, DE-46562 Voerde
Made in Germany



